

CKE.

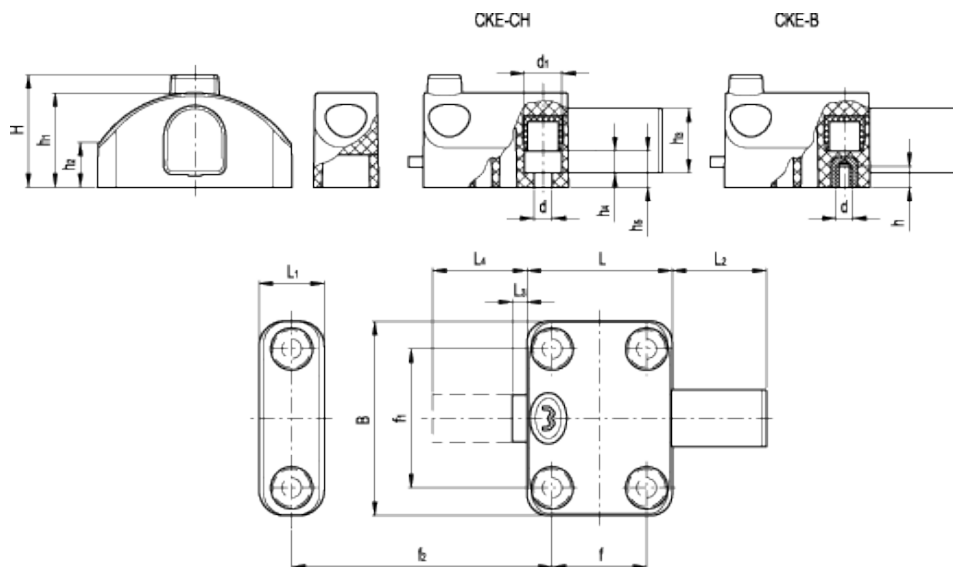
Locking bolt



ELESA Original design



INOX
Stainless Steel



technical informations

Body

Glass-fibre reinforced polyamide based (PA) technopolymer with security anti-intrusion-profiled slot. Resistant to solvents, oils, greases and other chemical agents.

Colour

Black, matte finish.

Closing button

Techopolymer, red colour.

Closing lever

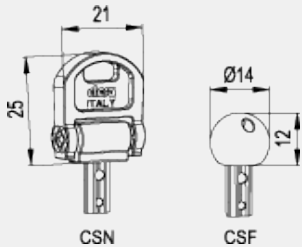
AISI 304 stainless steel.

Assembly

- CKE.40 CH: through holes for M5 cylindrical-head screws.
- CKE.40 B: brass bosses, tapped blind holes.

Key (to order separately)

- CSN (code 6951): acetal resin based (POM) technopolymer fold-away key, red colour, anti-intrusion-profiled stainless steel insert.
 - CSF (code 6952): polyamide based (PA) technopolymer ball key, red colour, anti-intrusion-profiled stainless steel insert.
- On request and for sufficient quantities the security keys can be supplied in black colour too.



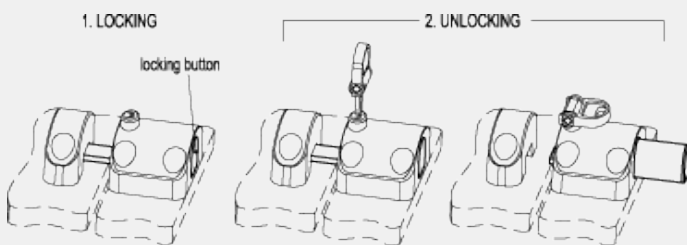
Functioning of the safety device

CKE. locking bolt has been designed to be opened only by authorised people, provided with the proper key.

1. Locking: press the locking button until the red part of it disappears completely into the body and the device snaps.

Warning: be sure the key is not inserted during locking operations.

2. Unlocking: insert the key (without turning it) and make the device snap.



Standard Elements		Main dimensions											Mounting holes					Weight		
Code	Description	B	L	L ₁	L ₂	L ₃	L ₄	f	f ₁	f ₂	H	h ₁	h ₂	h ₃	d	d ₁	h ₄	h ₅	h	g
7901	CKE.40 CH-5	53.5	40	18	26	4	30	26	38	31-42	31	26	12	17.5	5.5	10	6	10	-	85
7905	CKE.40 B-M5	53.5	40	18	26	4	30	26	38	31-42	31	26	12	17.5	M5	-	-	-	6	100



STANDARD MACHINE ELEMENTS WORLDWIDE